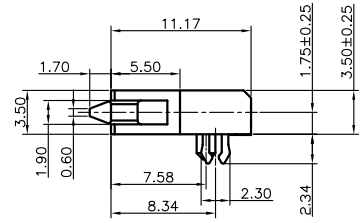
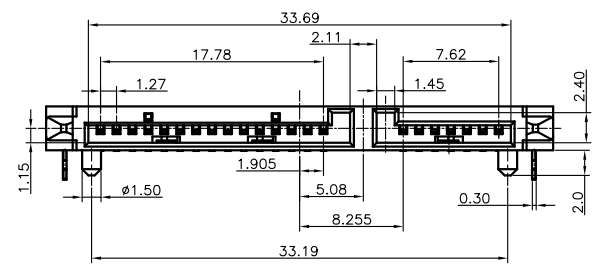
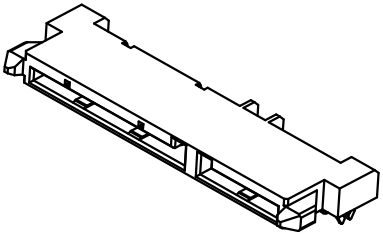
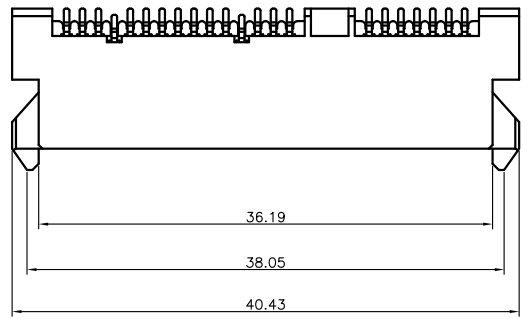


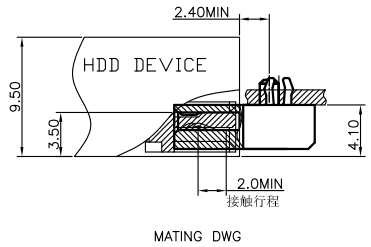
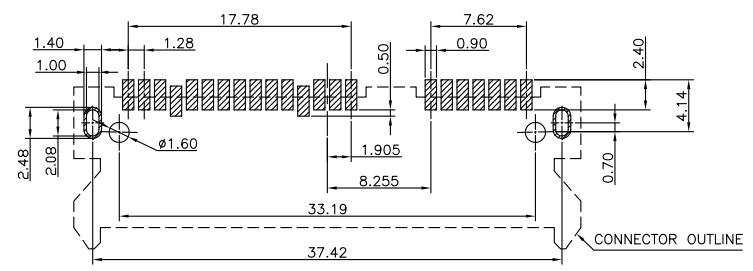
REV.	ECN.NO.	APPD.
A	/	ZFY

NOTE:

- MATERIAL:
HOUSING: LCP WITH 30% GF, UL 94V-0, BLACK COLOR.
CONTACTS: PHOSPHOR BRONZE.
BOARDLOCKS: BRASS.
- FINISH:
CONTACTS: GOLD FALSH PLATED ON CONTACT AREA, [100μ"] MIN..
BRIGHT-TIN ON SOLDER TAIL, WITH ENTIRE CONTACT UNDERPLATED [50μ"] MIN.. NICKEL.
BOARDLOCKS: [100μ"] MIN. BRIGHT-TIN OVER[50μ"] MIN. NICKEL ON ENTIRE BOARDLOCK.
- PART NUMBER DESCRIPTION :



ST22-0140-G618
1: 黑色
G: 镀半金G/Fu"
6:LCP



TOLERANCE: ±0.05
RECOMMENDED PCB LAYOUT
(TOP VIEW)

TOLERANCE UNLESS OTHERWISE SPECIFIED	
.XXX ±0.15	.X' ±5°
.XX ±0.20	.XX' ±2°
.X ±0.30	

FLW 深圳市华联威电子科技有限公司
HUA LIAN WEI TECHNOLOGY ELECTRONICS CO;LTD.

APPROVED		PART NAME:	SATA 7+15P SMT H=3.5mm 板上定位柱1.50mm2.08孔 鱼叉脚下2长针			
CHECKED		PART No:	ST22-0140-G618			C
DRAWN	yanggufieng	PROJECTION:	UNIT:	SCALE	SHEET	REV.
DATE	2021.10.20		mm	1:1	10F1	A