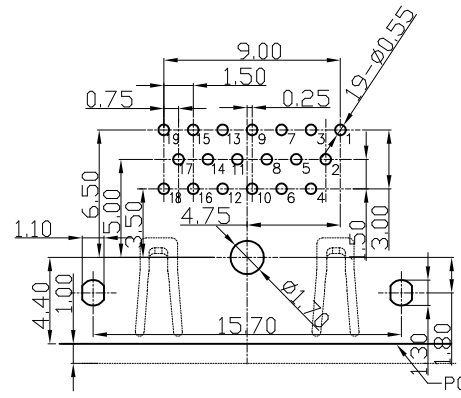


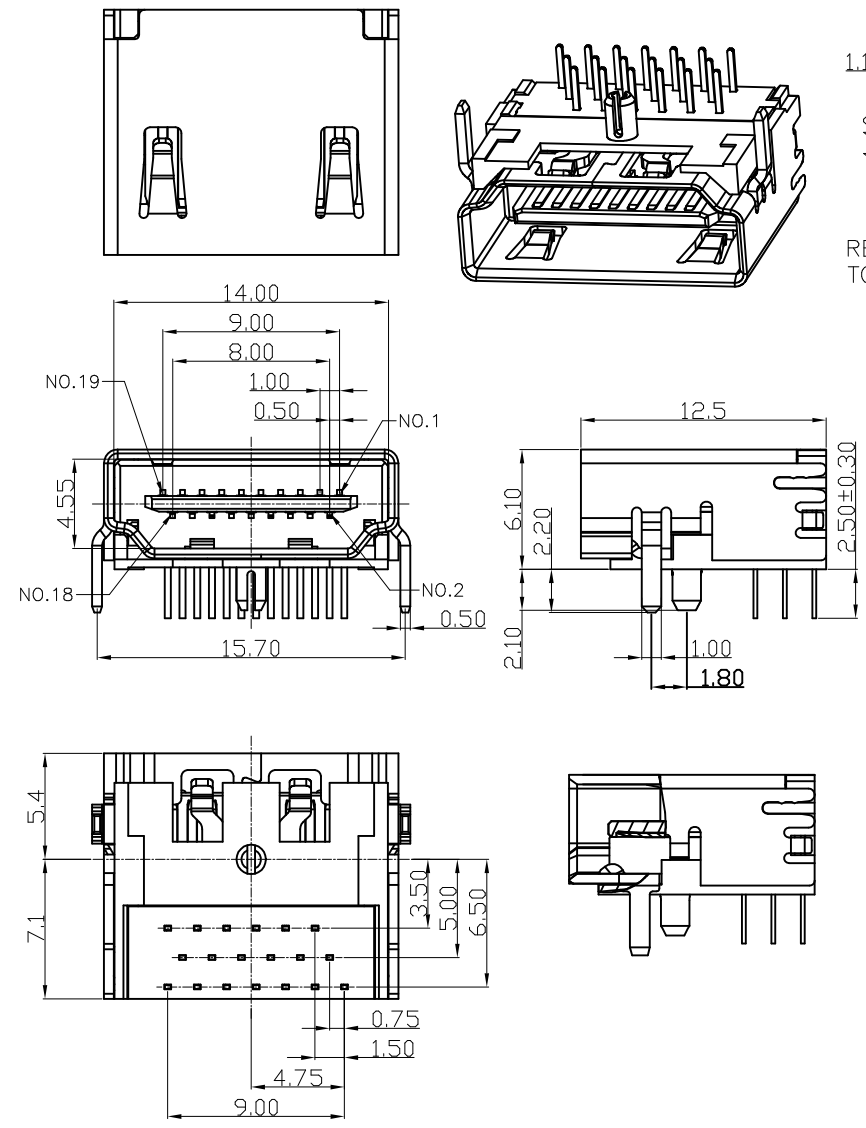
| REV. | ECN.NO. | APPD. |
|------|---------|-------|
| A | / | pcy |

NOTES:

1. MATERIAL:
 - 1.1 Housing:thermoplastic plastics
 - 1.2 terminals:Copper Alloy
Gold plated in contact area:
Tin plated in termination
Nickel Plated overall
 - 1.3 Shell:Steel&Copper Alloy
Nickel/Au Plated overall
2. ELECTRICAL CHARACTERISTICS:
 - 2.1 Rating Current :0.5 Ampere
 - 2.2 Rating Voltage :40 V Max
 - 2.3 Contact Resistance:30 Milli ohms
 - 2.4 Insulation Resistance:100 Mega ohms Min.
3. MECHANICAL CHARACTERISTICS:
 - 3.1 Connector Mating force: 4.5kg MAX
 - 3.2 Connector Unmating force:1.0Kg min
 - 3.3 Durability:10000Cycles.
4. ENVIRONMENT CHARACTERISTICS:
 - 4.1 Operating temperature:-20°C to +85°C
 - 4.2 Storage temperature:-20°C to +65°C



RECOMMENDED PCB LAYOUT (TOP VIEW)
TOLERANCE FOR PCB LAYOUT IS ±0.05



HD23-011X-XXX0X1

- 1:Iron alloy
Ni plating
 - 5:Copper alloy
Ni plating
 - 4:Iron alloy
Au plating
 - 8:Copper alloy
Au plating
 - 1:tray
 - 2:Tube
 - 8:Tape&Reel
 - 9:Tape&Reel+Mylar
 - 1:Black
 - 5:PA9T
 - 2:PBT
 - 6:LCP
- 1:Au 1u", 3:Au 3u"
5:Au 5u", 7:Au 10u'
8:Au 15u", A:Au 30u"

| | | | | | | |
|--------------------------------------|--------------|--|------------------|---------------------|--------|-------|
| TOLERANCE UNLESS OTHERWISE SPECIFIED | | FLW 深圳市华联威电子科技有限公司 HUA LIAN WEI TECHNOLOGY ELECTRONICS CO;LTD. | | | | |
| .XXX ±0.10 | .X' ±3' | | | | | |
| .XX ±0.20 | .XX' ±2' | | | | | |
| .X ±0.30 | | APPROVED | PART NAME: | HDMI 19P/F 三排90度 无耳 | | |
| CHECKED | | PART No: | HD23-011X-XXX0X1 | | | C |
| DRAWN | pengchaoyong | PROJECTION: | UNIT: | SCALE: | SHEET: | REV.: |
| DATE | 2014.12.2 | | mm | 1:1 | 1 OF 1 | A |