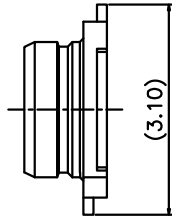
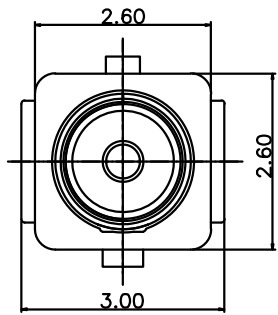


REV.	ECN.NO.	APPD.
A	XXXXXXXXXX	yangguifeng

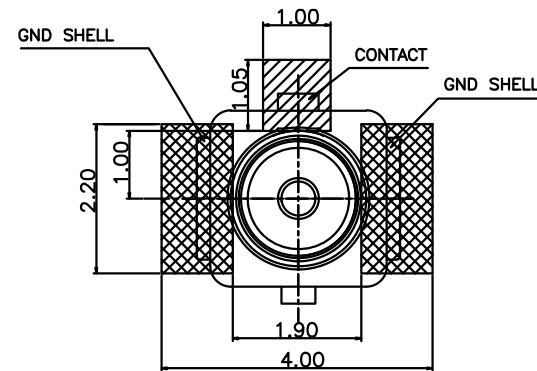
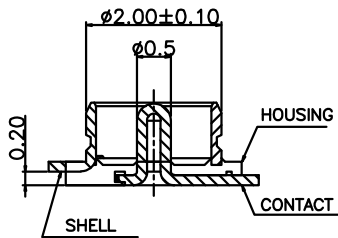
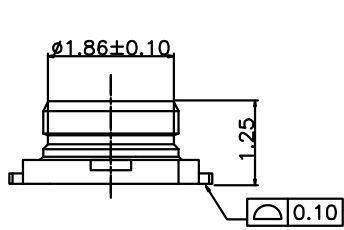


- CENTER CONTACT
- GROUND CONTACT

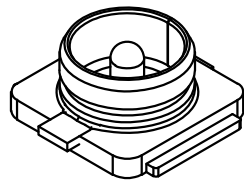
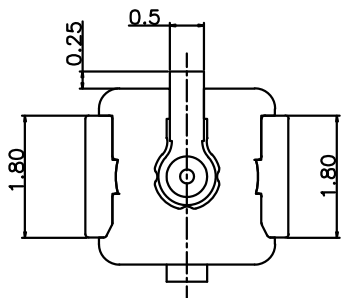
RECOMMENDED PCB LAYOUT
(TOLERANCE:±0.05)

主要技术规格:

1. 额定值: 50mA DC12V
2. 接触电阻: ≤50mΩ
3. 操作力: 180±40gf
4. 行程: 0.20±0.1mm
5. 绝缘电阻: ≥100MΩ
6. 抗电强度: 250V 50HZ 1Min.
7. 寿命: 100,000 Cycles



RECOMMENDED PCB LAYOUT
(TOLERANCE:±0.05)



TOLERANCE UNLESS OTHERWISE SPECIFIED		FLW 深圳市华联威电子科技有限公司				
.XXX ±0.10		HUA LIAN WEI TECHNOLOGY ELECTRONICS CO.;LTD.				
.XX ±0.20						
.X ±0.30						
APPROVED		PART NAME:	一代IPEX连接器立贴			
CHECKED		PART No:	SFP11-113A230-01			C
DRAWN	yangguifeng	PROJECTION:	UNIT:	SCALE:	SHEET:	REV.
DATE	2021.12.01		mm	1:1	1 OF 1	A