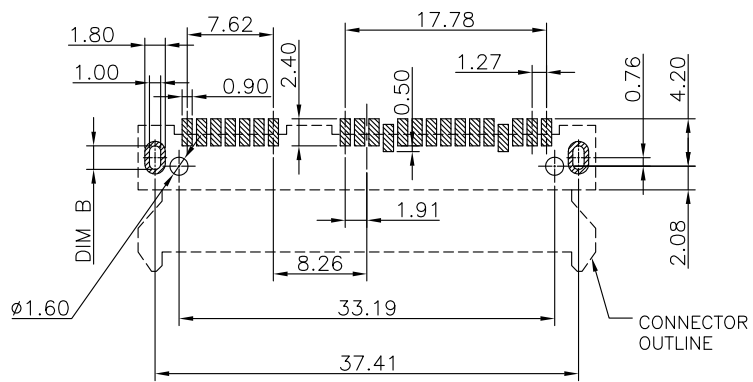
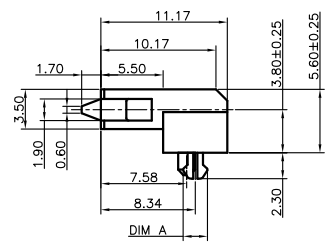
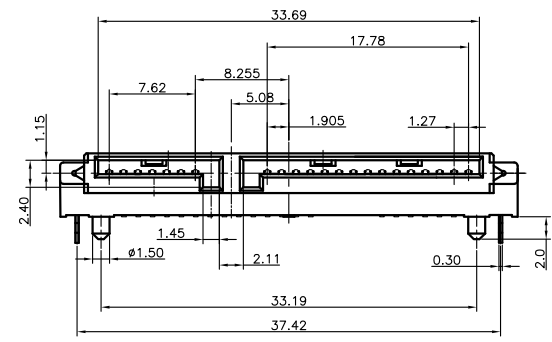
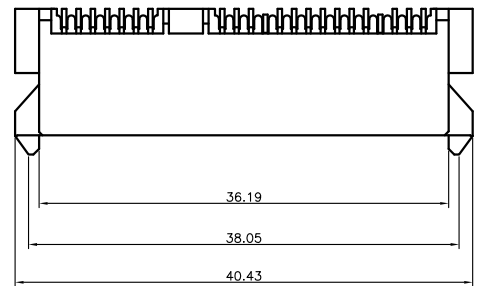


REV.	ECN.NO.	APPD.
A	/	/



TOLERANCE: ±0.05,
RECOMMENDED PCB LAYOUT
(TOP VIEW)

TABLE A

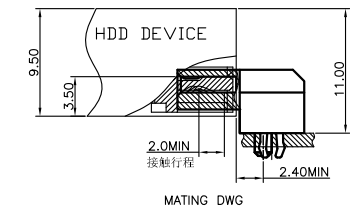
RSF-C025-B22XXT-L01	2.30	2.08
RSF-C025-B22L1T-L02	2.50	2.28
PART NO.	DIM A	DIM B
	CONNECTOR	P.C.BOARD

NOTE:

- MATERIAL:
HOUSING: LCP WITH 30% GF, UL 94V-0, BLACK COLOR.
CONTACTS: BRASS.
BOARDLOCKS: BRASS.
- FINISH:
CONTACTS: GOLD FLASH PLATED ON CONTACT AREA, [100μ"] MIN..
BRIGHT-TIN ON SOLDER TAIL, WITH ENTIRE CONTACT UNDERPLATED [50μ"] MIN.. NICKEL.
BOARDLOCKS: [100μ"] MIN. BRIGHT-TIN OVER[50μ"] MIN. NICKEL ON ENTIRE BOARDLOCK.
- PART NUMBER DESCRIPTION :

ST22-0940-G618

G: 镀半金G/Fu"
1: 黑色
6: LCP



TOLERANCE UNLESS OTHERWISE SPECIFIED		HLW 深圳市华联威电子科技有限公司			
.XX ±0.10	.X ±0.20	.X ±0.30	.X ±3'	.XX ±2'	HUA LIAN WEI TECHNOLOGY ELECTRONICS CO;LTD.
APPROVED		PART NAME:	SATA 7+15P SMT H=5.6mm板上鱼叉脚		
CHECKED		PART No:	ST22-0940-G618	C	
DRAWN	weihong	PROJECTION:	UNIT:	SCALE:	SHEET
DATE	2021.9.23	mm	1:1	10F1	REV. A