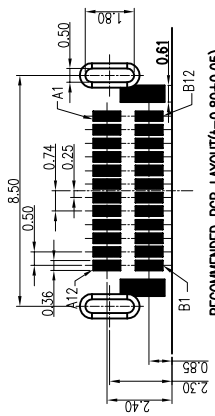
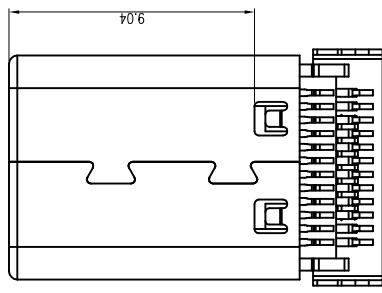
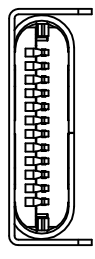
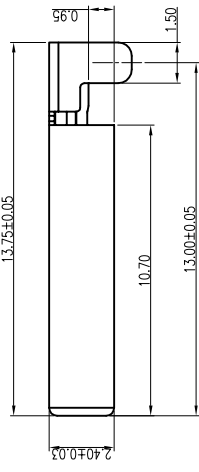
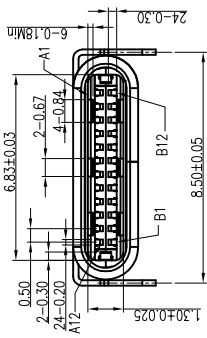
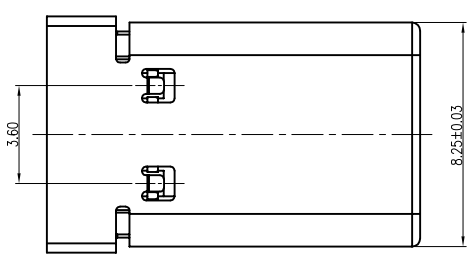
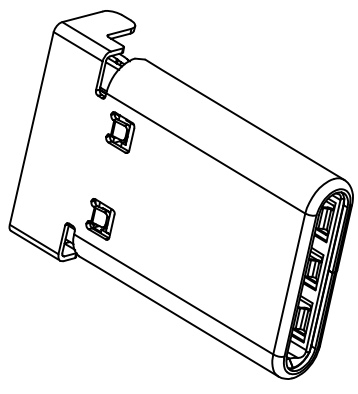


F 2 3 4 5 6 7 8 9

REV.	ECN.NO.	APPD.
A	/	/

**SPECIFICATION**  
**MATERIAL**  
 See drawing  
**STANDARD DATA**  
 Rating current: 3.0 A  
**ELECTRICAL**  
 Insulator resistance: 100Mohms Min.  
 Withstanding voltage: 100 VAC / minute  
 Contact resistance: 40mohms Max.  
**MECHANICAL**  
 Mating force: 5~20N Max.  
 Unmating force : 6~20N Min.  
 Durability: 10,000 cycles Min.



RECOMMENDED PCB LAYOUT(t=0.80±0.05)  
 COMPONENT SIDE(GENERAL TOLERANCE±0.05)

A1	GND	B12	GND
A2	SSTXP1	B11	SSRXP1
A3	SSTXN1	B10	SSRXN1
A4	VBUS	B9	VBUS
A5	CC1	B8	SBU2
A6	DP1	B7	DN2
A7	DN1	B6	DP2
A8	SBU1	B5	CC2
A9	VBUS	B4	VBUS
A10	SSRXN2	B3	SSTXN2
A11	SSRXP2	B2	SSTXP2
A12	GND	B1	GND
PIN	SIGNAL NAME	PIN	SIGNAL NAME

TOLERANCE UNLESS OTHERWISE SPECIFIED .XXX ±0.10 .XX ±0.20 .X ±0.30	X' ±3' .XX' ±2'	<b>FLW</b> 深圳市华联威电子科技有限公司	
		HUA LIAN WEI TECHNOLOGY ELECTRONICS CO.,LTD.	
APPROVED		PART NAME:	TYPE C公头侧合式沉板0.95双排SMT
CHECKED		PART No:	U573-2115-G61018 C
DRAWN	weihong	PROJECTION:	UNIT: SCALE SHEET REV.
DATE	2021.11.06		mm 1:1 10F1 A

F 2 3 4 5 6 7 8 9