

REV.	ECH. NO.	APPD.
A	EXXXXXXXXXXXX	yongguifeng

NOTES:  
 1. MATERIAL:  
 MOLDING: LCP U594 V-0  
 CONTACT: COPPER ALLOY.  
 GOLD PLATED Min ON CONTACT AREA, 100u"''  
 Min TIN (LEAD FREE) ON SOLDER AREA,  
 SHELL: SUS201-H,T=0.30±0.03mm  
 50u" NICKEL PLATING OVER ALL.

2. MECHANICAL:  
 INSERTION: 5~20N.  
 EXTRACTION: 8~20N AFTER TEST.  
 DURABILITY: 5000 CYCLES

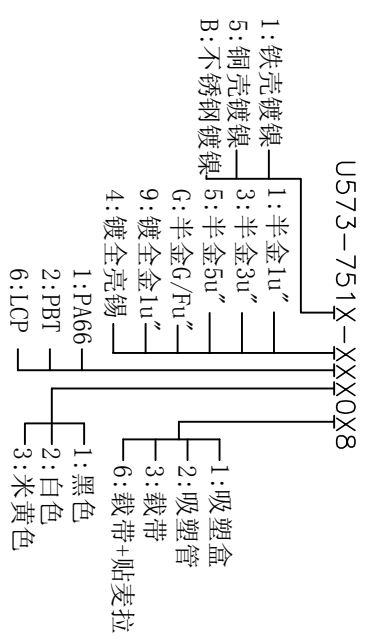
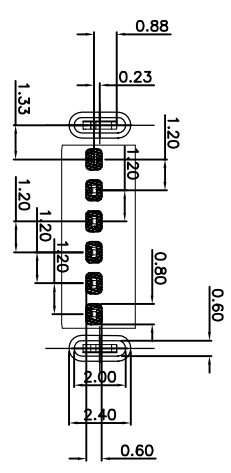
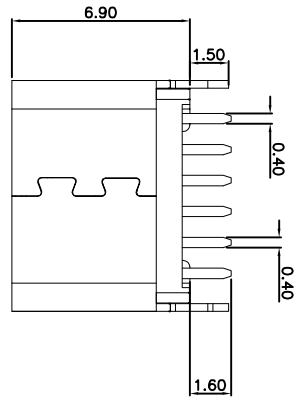
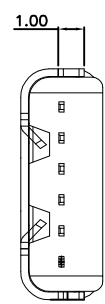
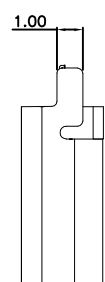
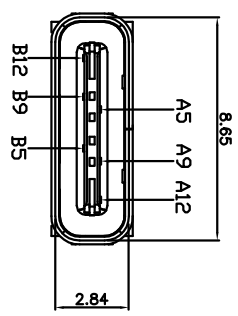
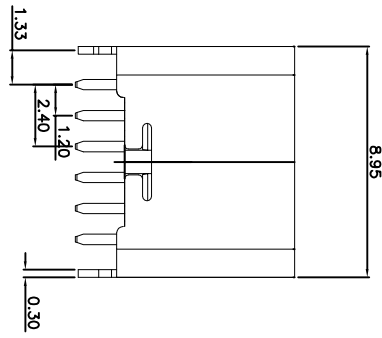
3. ELECTRICAL:  
 CURRENT: 3A FOR VBUS;  
 1.25A FOR GND PIN.  
 0.25A FOR OTHER.

VOLTAGE: 20 V MAX  
 WITHSTANDING VOLTAGE: 100V AC R.M.S.  
 CONTACT RESISTANCE: 40mΩ MAX.  
 INSULATION RESISTANCE: 100MΩ MIN.

4. ENVIRONMENTAL  
 TEMPERATURE RANGE -25°C ~ +85°C

5. 尺寸标注事项:  
 图示有标示⊗者为首样全检, 重点管控尺寸.  
 6. 产品符合RoHS标准

PIN	SIGNAL NAME
B12	GND
B9	VBUS
B5	CC2
A5	CC1
A9	VBUS
A12	GND



TOLERANCE UNLESS OTHERWISE SPECIFIED		HUA LIAN WEI TECHNOLOGY ELECTRONICS CO.,LTD.	
.XXX ±0.10	.X ±3	<b>HLW 深圳市华联威电子科技有限公司</b> HUA LIAN WEI TECHNOLOGY ELECTRONICS CO.,LTD.	
.XX ±0.20	.X ±2		
.X ±0.30	.X ±2		
APPROVED	PART NAME:	TYPE C 6P 直插6.8母座	
CHECKED	PART No.:	U573-751B-G61038	
DRAWN	PROJECTION:	UNIT:	SCALE
DATE	2021.12.01	mm	1:1
			SHEET
			1 OF 1
			REV.
			A