

9

8

7

6

5

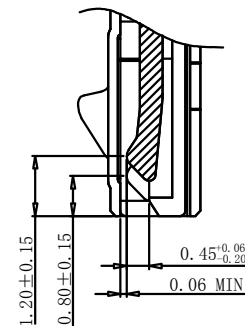
4

3

2

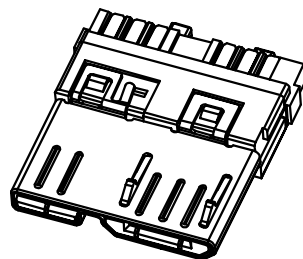
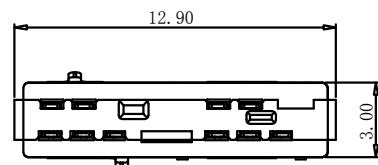
1

REV.	ECN.NO.	APPD.
A	/	pcy
A1	/	LJF

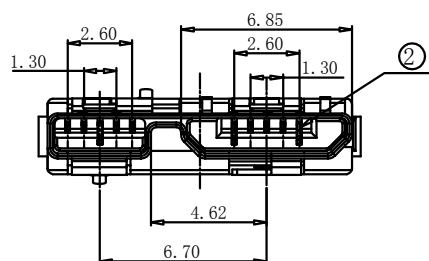
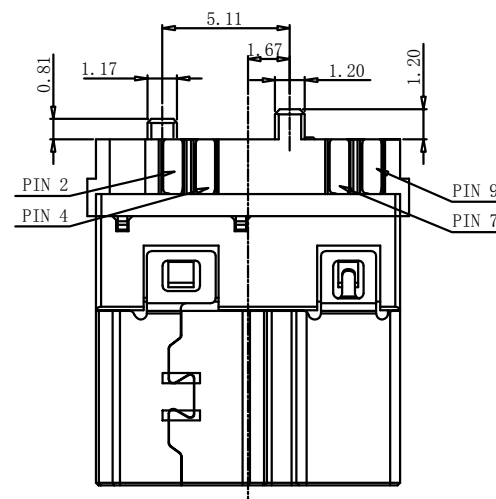
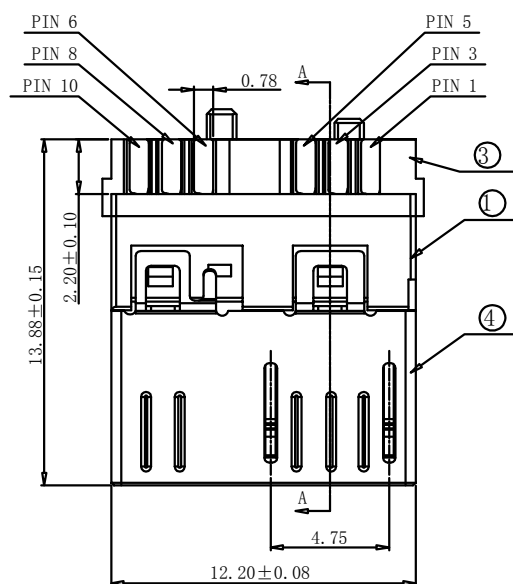


SEC. A-A

SCALE 2:1



3D VIEW



Remark:

1.MATERIAL:

1.1 Housing:thermoplastic plastics.

1.2 terminals:Copper Alloy

1.3 Front Shell:Copper Alloy/SPCC.
Middle Shell:SPCC

2.characteristics:

2.1 Rating Voltage : 30V AC.

2.2 Rating Current:PIN1&PIN4(Vbus&Corresponding ground PIN)

1.8A MAX Other PINS 0.25A min.

2.3 Contact Resistance:PIN1&PIN4:30 mΩ MAX. Other PINS: 50 mΩ

2.4 Insulation Resistance:100 MΩ MIN.

2.5 Withstanding Voltage:AC 100V between adjacent contacts

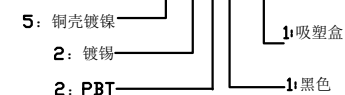
2.6 Mating force: 3.57Kgf MAX(35N MAX)

2.7 Extraction force:1Kgf Min(9.8N Min)

2.8 Life test:1500Cycles MIN.

2.9 Temperature Range: -30℃~+80℃.

U331-0145-221017



TOLERANCE UNLESS OTHERWISE SPECIFIED		FLW 深圳市华联威电子科技有限公司 HUA LIAN WEI TECHNOLOGY ELECTRONICS CO.;LTD.				
.XXX ±0.10	.X' ±3'	APPROVED	PART NAME:	MICRO 3.0公头焊线式全通槽		
.XX ±0.20	.XX' ±2'	CHECKED	PART No:	U331-0145-221017	C	
.X ±0.30		DRAWN	Lijinfeng	PROJECTION:	UNIT:	SCALE
		DATE	2021.08.03	mm	1:1	SHEET
				10F1	REV.	A1

9

8

7

6

5

4

3

2

1