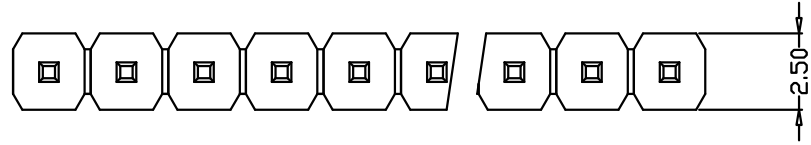


REV.	ECN.NO.	APPD.
A	XXXXXXXXXX	chenjianhui

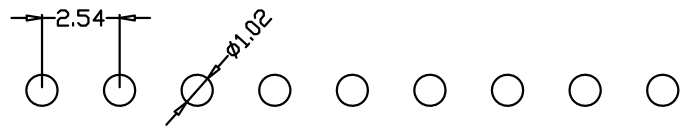
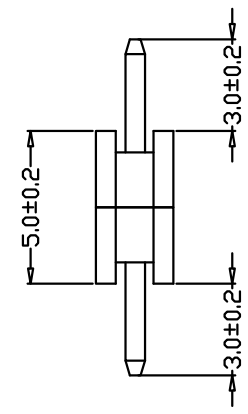
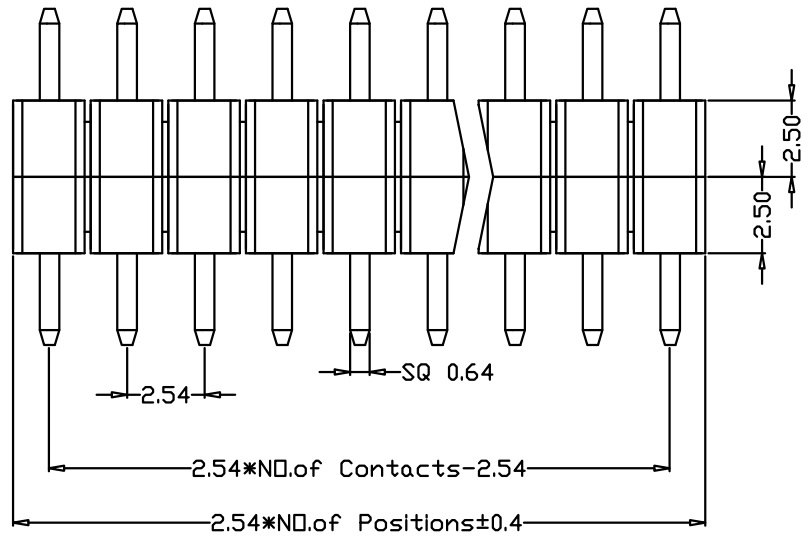
技术指标 (Technical Index) :

1. 工作温度 (Temperature range) : -25° C-85° C.
2. 额定电压 (Rated voltage) : 250V DC/AC (rms)
3. 额定电流 (Rated current) : 5A AC, DC
4. 接触阻抗 (CONTACT Resistance) : ≤25MΩ
5. 耐压值 (Withstanding voltage) : 1500V AC/minute
6. 绝缘阻抗 (Insulation resistance) ≥1000MΩ



216104-1248-G31018

G: 镀金G/Fu
 3: PA46
 1: 吸塑盒
 1: 黑色



PCB LAYOUT

TOLERANCE UNLESS OTHERWISE SPECIFIED		FLW 深圳市华联威电子科技有限公司				
.XXX ±0.10	.XX ±0.20	.X ±0.30	HUA LIAN WEI TECHNOLOGY ELECTRONICS CO;LTD.			
		.X' ±3'				
		.XX' ±2'				
APPROVED		PART NAME:	排针 2.54间距 1x5P单排双塑 L=11.0			
CHECKED		PART No:	216104-1248-G31018		C	
DRAWN	chenjianhui	PROJECTION:	UNIT:	SCALE	SHEET	REV.
DATE	2022.10.22		mm	1:1	10F1	A

由 Autodesk 教育版产品制作

由 Autodesk 教育版产品制作