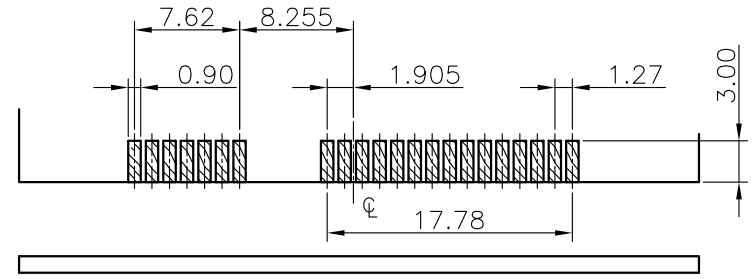
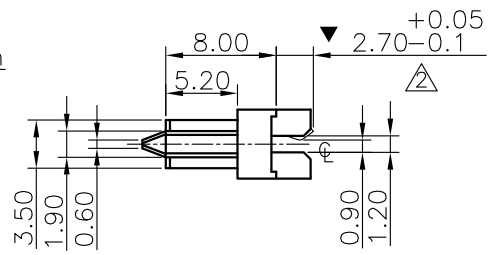
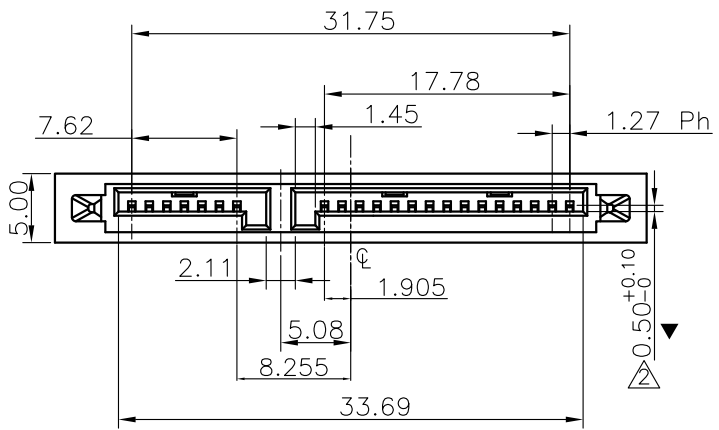
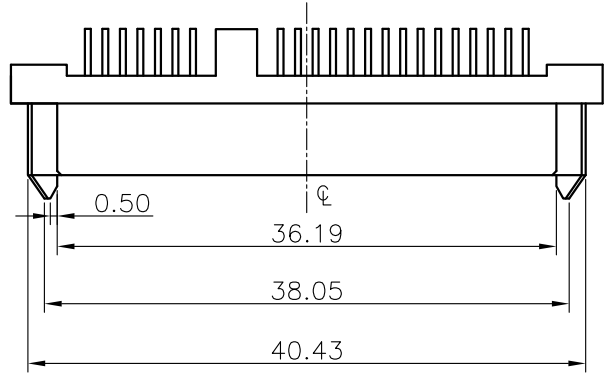


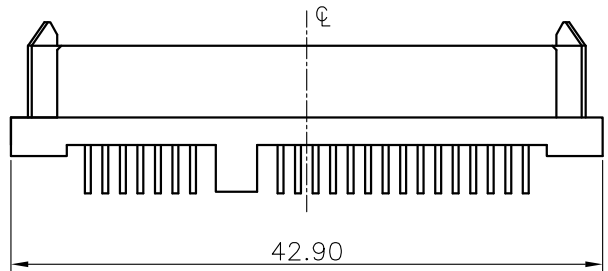
REV.	ECN.NO.	APPD.
A	EXXXXXXXXXX	yangguifeng

NOTE:

- MATERIAL:
HOUSING: LCP WITH 30% GF, UL 94V-0, BLACK COLOR.
CONTACTS: BRASS
- FINISH:
CONTACTS: GOLD FLASH PLATED ON CONTACT AREA, [100μ"] MIN..
BRIGHT-TIN ON SOLDER TAIL, WITH ENTIRE CONTACT UNDERPLATED [50μ"] MIN.. NICKEL.
- SPECIFICATION:
3.1 RATING:1.5A;
3.2 CONTACT RESISTANCE:≤30mΩ;
3.3 INSULATION RESISTANCE:≥1000MΩ;
3.4 WITHSTAND VOLTAGE:AC500V FOR ONE MINUTE,
CURRENT LEAKAGE:0.5MA MAX;
3.5 INSERTION AND EXTRACTION FORCE:0.4~4KGF;
3.6 LIFE TEST:500 CYCLES.



RECOMMEND PCB LAYOUT (T=1.2)
PCB TOLERANCE:±0.05



ST21-0640-XXX8
G: 半金G/Fu" 1: 黑色
6: LCP

TOLERANCE UNLESS OTHERWISE SPECIFIED		FLW 深圳市华联威电子科技有限公司 HUA LIAN WEI TECHNOLOGY ELECTRONICS CO;LTD.				
.XXX ±0.10	.XX ±0.20	.X ±0.30	.X' ±3'	.XX' ±2'		
APPROVED		PART NAME:	SATA 7+15P 短体卧贴SMTH=6.5			
CHECKED		PART No:	ST21-0640-G618			C
DRAWN	yangguifeng	PROJECTION:	UNIT:	SCALE	SHEET	REV.
DATE	2021.12.01		mm	1:1	1 OF 1	A