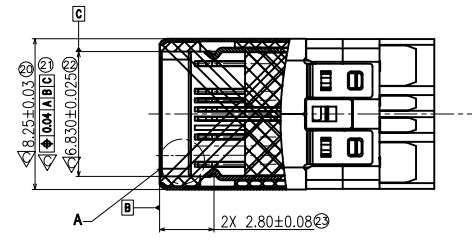
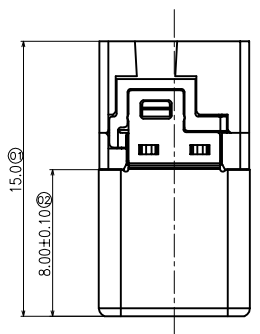
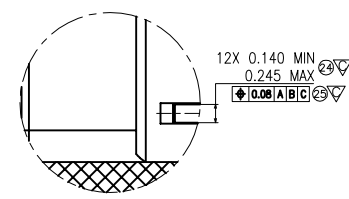


REV.	ECN.NO.	APPD.
A	/	ZFY



SECTION D-D



DETAIL A  
SCALE 4:1

NOTES:

- 1.MATERIAL:  
 1.1 HOUSING: LCP,UL94V-0  
 1.2 COVER: LCP,UL94V-0  
 1.3 CONTACT: C2680&C7025  
 1.4 SHELL: SUS 304  
 1.5 LATCH: SUS 301

2.PLATING:

- 2.1 CONTACT TERMINAL:  
 0.025~0.75um Au Min. GOLD PLATING ON CONTACT AREA  
 3.0um MATTE Tin PLATING ON SOLDER TAILS  
 2.0um Min. Ni UNDERPLATING OVER ALL  
 2.2 SHELL: 2.0um Min. Ni PLATING OVER ALL.

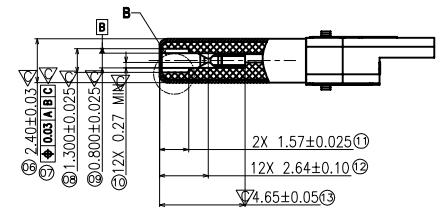
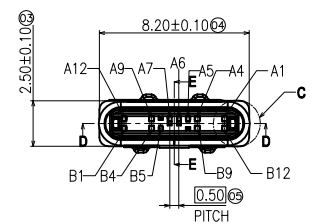
3.ELECTRICAL CHARATERISTICS:

- 3.1 CURRENT RATING: 2.0~9.0A Max.  
 3.2 VOLATAGE RATING: AC 500V  
 3.3 INSULATION RESISTANCE:500MΩ  
 3.4 CONTACT RESISTANCE: 40mΩ  
 3.5 OPERATING TEMPERATURE RANGE: -55°C~+85°C

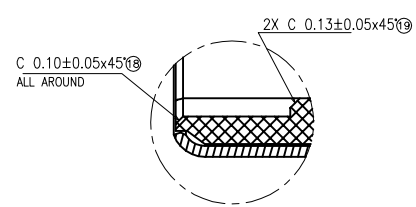
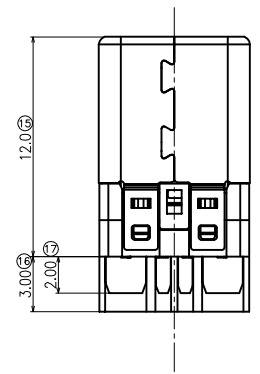
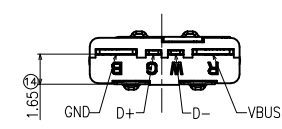
4.MACHINE CHARACTERISTICS:

- 4.1 INSERT FORCE: 1.3±0.5 kg/F  
 4.2 EXTRACT FORCE: 1.3±0.5 kg/F  
 4.3 DURABILITY: 10000 CYSLES AT  
 A MAX RATE OF 200CYCLES PER HOUR

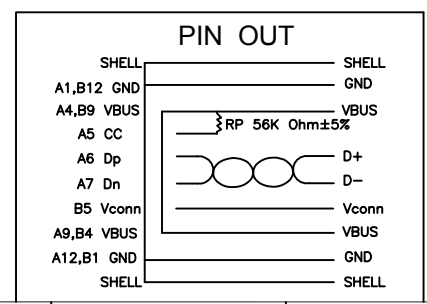
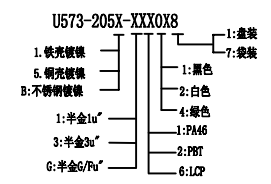
5.EMPHASIS CONTROL SIZE” ”



SECTION E-E



DETAIL B  
SCALE 4:1



TOLERANCE UNLESS OTHERWISE SPECIFIED	
.XXX ±0.15	.X* ±5°
.XX ±0.20	.XX* ±2°
.X ±0.30	

**FLW** 深圳市华联威电子科技有限公司  
 HUA LIAN WEI TECHNOLOGY ELECTRONICS CO;LTD.

APPROVED		PART NAME:	TYPE C公头2.0(无EMC弹片款)			
CHECKED		PART No:	U573-2055-X61078		C	
DRAWN	ZhangFenYan	PROJECTION:	UNIT:	SCALE	SHEET	REV.
DATE	2018.10.10		mm	1:1	10F1	A